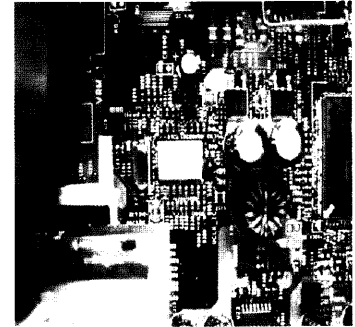
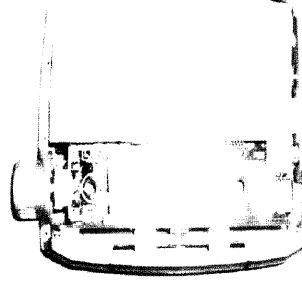


# ELPACTO® Dual Sheet

**ITEM ATM-F1H** **RoHS compliant**

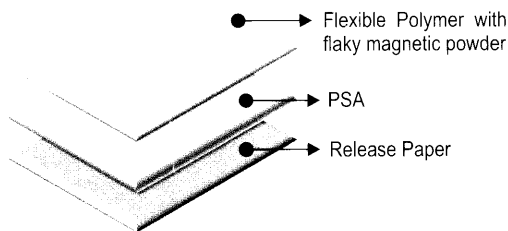
Dual fuction of thermal and EMI noise  
 Polymer resin with magnetic flake filler  
 Custom Processing According to your application needs  
 - Die-cut: Circle, Rectangular, Special Shapes, Half Cutting, etc.



Mobile phone, Laptop computure, Digital Camera  
 PDP, LCD, other communication devices.

EMI absorber thickness	mm	0.1 ~ 1.5
Adhesive thickness	mm	0.03 / 0.05 / 0.1
Standard size	mm	sheet type : 210 X 300 / Roll type : 210 x 10Meter / 20Meter
Temperature range	℃	-25 ~85
Hardness (shore A)	degree	90 +/- 10
Thermal conductivity	W/m·K	Min. 1.5
Surface Resistivity	Ω/sq	Min. 1.0 × 10 <sup>8</sup>
Tensile Strength	Mpa	Min. 5.00
Storage Condition		Temperature : 10 ~ 25 ℃, Relative Humidity : 25 ~ 55%
Attenuation		refer to the below S11 reflection loss chart

RoHS Material	Pass / Fail	RoHS Material	Pass / Fail
Lead (Pb)	PASS ICP-AES	Mercury (Hg)	PASS ICP-AES
Cadmium (Cd)	PASS ICP-AES	Bromine Compounds	PASS PBBs PBDEs GC/MS
Hexavalent Chromium (Cr6)	PASS UV-Vis		PASS GC/MS



\* Attenuation(Typical Value)

