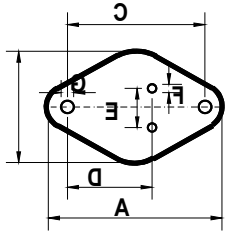
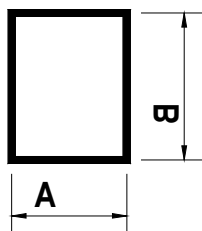
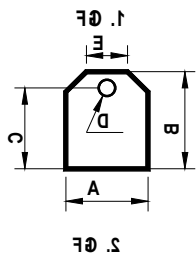
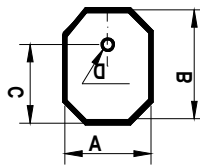
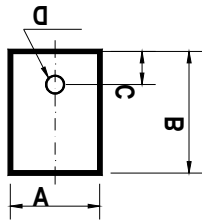


**STANDARDFORMEN für Folien** (in mm) *STANDARD CONFIGURATIONS for films*



**TO-3 + TO-66**

Type Nr.	A	B	C	D	E	F	G
TO-3	42.0	29.0	30.0	17.0	11.0	1.5	3.1
TO-3/1	50.0	36.0	30.0	17.0	11.0	2.0	4.2
TO-3/4	42.0	28.2	30.0	16.9	10.9	2.0	4.2
TO-66	35.0	21.0	24.4	14.7	5.1	1.5	3.1



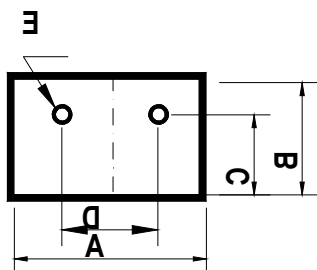
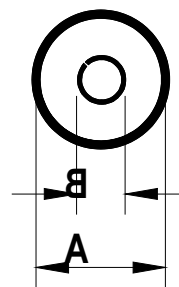
**TO-220, TO-3PF, TOP-3, TO-247/TO-218, TO-126+SOT-32**

Type Nr.	A	B	C	D	Type Nr.	A	B	C	D
TO-220/3	10.5	15.0	6.0	2.3	TO-247	21.0	24.0	6.0	3.1
TO-220/10	10.5	15.8	2.8	3.8	4127D	19.0	24.0	7.0	3.2
TO-220/20	10.5	21.0	6.0	3.2	0111B	24.0	30.0	9.0	3.1
TO-220/7	11.0	16.0	4.0	4.0	0050	27.0	40.0	7.0	3.5
TO-220/18	12.0	18.0	4.0	3.1	0266	42.0	35.0	13.5	3.0
TO-220/8	12.0	18.0	4.5	3.1	TO-126	9.0	11.0	5.5	2.5
TO-220/19	12.7	19.05	4.75	3.7	TO-126/1	9.0	11.0	5.5	4.2
TO-220	13.0	18.0	4.5	3.0	0262	9.0	20.0	10.0	4.0
TO-220/6	13.0	18.0	4.5	3.7	TO126/2	10.0	15.0	7.7	3.7
TO-220/4	13.0	16.0	4.5	3.0	SOT-32/2	7.0	10.0	5.0	3.7
TO-220/12	13.5	19.1	5.6	3.8	SOT-32	8.0	11.0	3.8	3.1
TO-220/2	14.3	17.5	12.0	3.2	SOT-32A Fig. 1	12.0	16.0	4.0	3.2
TO-220/5	14.3	21.7	7.5	3.6	SOT-32/1 Fig. 2	12.0	16.0	4.0	3.2
TO-220/9	18.0	22.0	6.5	3.2					
TOP-3 Fig. 2	17.5	20.5	4.5	3.1					
TOP-3/1	17.5	20.5	4.5	3.1					
TOP3PF/1	17.0	26.0	7.5	3.1					
TOP3/2	17.0	21.0	6.0	3.2					
0269	17.0	22.0	5.5	3.3					
TO 3PF/3	18.0	23.0	7.0	3.1					
TO 3PF/4	20.0	30.0	7.5	3.3					
TO3PF	20.0	24.0	7.5	3.1					
TO-218 Fig.2	22.0	20.0	4.0	3.9					
TO-218/1	22.0	26.0	8.0	3.1					

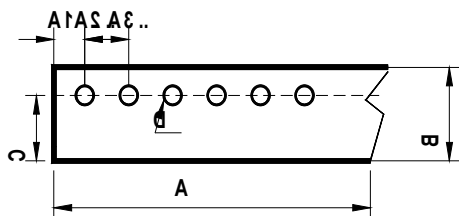
Typen Nr.	A	B	Typen Nr.	A	B
3144	7.0	18.0	0195	18.0	35.0
0148	12.0	20.0	TO-220/11CM	18.8	21.8
0143	12.0	23.0	0079	19.0	22.0
3267 (0200)	12.0	26.0	3158 (TO-3PF)	20.0	24.0
TO-220/20CM	12,7	19,1	3389	20.0	28.0
TO-220/10CM	12,7	21.8	3608D	20.0	30.0
3159 (TO-220)	13.0	18.0	0131	21.7	14.3
TO-220/16CM	14.0	16.0	0064 (TO-218)	24.0	27.0
TO-220/CM	13.0	19.0	3481D	24.0	28.0
0575	14.0	20.0	0199 (TO-218)	24.0	29.0
0276	14.0	25.0	3300D	24.0	38.0
0123	15.0	20.0	0218	30.0	35.0
0192	15.8	24.0	0271	31.0	34.0
0245	16.0	21.0	0256	40.0	44.0
3675 (0155)	16.0	22.0	0203	47.0	50.0
0068	16.0	25.0	0147	51.0	53.0
0031	17.0	25.0			
0252	18.0	22.0			

STANDARDFORMEN für Folien (in mm) *STANDARD CONFIGURATIONS for films*

Type Nr.	A	B
0327	13.0	5.0
0278	15.0	5.0
DO-4/1	15.9	5.0
DO-4	16.0	5.1
0306	17.0	5.0
0587	20.0	40.0
2030	22.0	8.5
DO-5	25.0	6.6
DO-5/1	25.4	6.5
DO-5/2	20.0	6,1
0005	27.0	8.0
0288	35.0	8.0
617	48.2	25.3

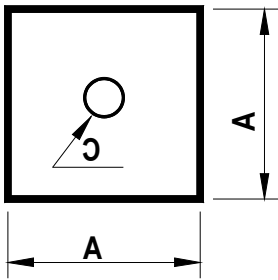


Type Nr.	A	B	C	D	E
5313	30.0	22.0	15.5	15.0	2x3.2
0111A	40.0	30.0	21.0	18.4	2x3.1
0141	25,4	19.1	14.6	12.7	2x3.2

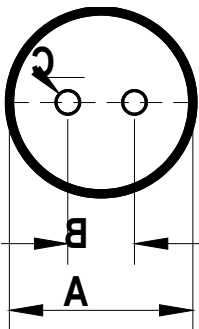


Type Nr.	für/for	A	B	C	D	A1	A2	A3...
4812	3xTO220	45.0	20.0	15.0	3x3.9	7.5	15.0	15.0
5677	3xTO220	35.0	18.0	14.0	3x3.5	6.4	11.1	11.1
0336	3xTO220	38.1	19.1	14.3	3x3.2	6.35	12.7	12.7
0201	3xTO220	40.0	18.0	13.0	3x3.2	7.3	12.7	12.7
0115	3xTO220	34.0	17.0	12.5	3x3.0	5.5	11.5	11.5
0134	3xTO220	37.0	18.0	14.0	3x3.0	6.0	12.5	12.5
0223	3xTO220	45.0	18.0	14.0	3x3.2	7.5	15.0	15.0
0054	3xTO220	38.0	21.0	16.0	3x3.6	7.0	12.0	12.0
0260	3xTO220	36.5	18.0	14.0	3x3.2	5.6	12.7	12.7
0455	4xTO3PF	67,0	21,0	14,9	4x3,1	8,0	16,5	18,0
0065	4xTO3PF	80.9	25.0	17.0	4x3.5	10.0	20.3	20.3
0165	4xTO220	60.0	18.0	14.0	4x3.2	7.5	15.0	15.0
0135	5xTO220	62.0	18.0	14.0	5x3.0	6.0	12.5	12.5
0096	6xTO220	69.0	17.0	13.2	6x3.1	5.75	11.5	11.5
0109	6xTO3PF	90.4	25.0	18.0	6x3.5	9.0	14.0	14.0
0062	4xSOT32	35.1	10.7	7.0	4x3.2	4.2	8.9	8.9
0222	8xTO220	92.5	18.0	14.0	8x3.0	6.0	11.5	11.5
0307	8xTO220	119.0	18.0	13.5	8x2.5	6.16	15.24	15.24
4846	14xTO220	162.6	20.0	13.0	14x3.3	7.0	11.4	11.4

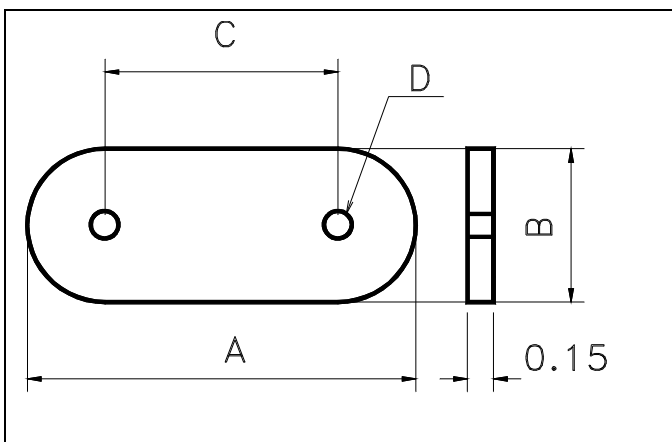
**STANDARDFORMEN für Folien (in mm) STANDARD CONFIGURATIONS for films**



Type Nr.	A	C	Bemerk./Remark
0212	22.0	4.0	Brücken/Bridge Rectifier
3605D	25.0	4.0	Brücken/Bridge Rectifier
0066	30.0	5.0	Brücken/Bridge Rectifier
0261	20.0	--	ohne Loch /without hole
0021	15.0	--	ohne Loch/without hole
0170	17.0	--	ohne Loch/without hole
0196	19.0	--	ohne Loch/without hole
0261	20.0	--	ohne Loch/without hole
0216	24.0	--	ohne Loch/without hole
0217	25.0	--	ohne Loch/without hole
0166	38.0	--	ohne Loch/without hole
0194	40.0	--	ohne Loch/without hole
0128	43.0	--	ohne Loch/without hole
0190	46.0	--	ohne Loch/without hole
0126	48.0	--	ohne Loch/without hole
0292	49.0	--	ohne Loch/without hole
0188	49.5	--	ohne Loch/without hole



Isolation v. Kondensatoren			
Type Nr.	A	B	C
0289	25.0	10.0	2x3.0
0270	36.0	10.0	2x3.5



Type Nr.	A	B	C	D
HC10	11.0	4.6	5.0	1.0
HC25	11.0	4.6	5.0	1.3
HC33	20.0	9.5	12.3	1.0
HC6	20.0	9.5	12.3	1.5
HC17	20.0	9.5	12.3	2.7